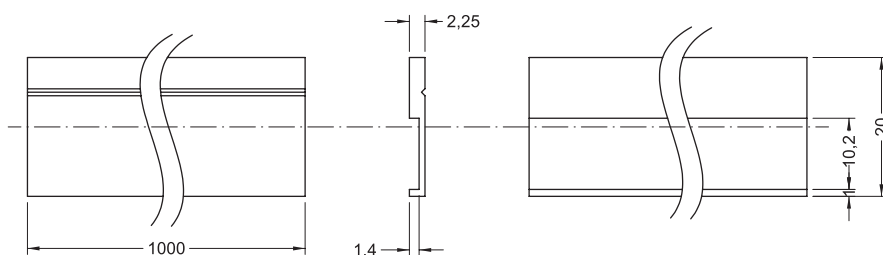


series

PS1 • PSG



PS1

MECHANICAL SPECIFICATIONS

Dimensions:	see drawing
Material:	aluminium
Length:	1 m

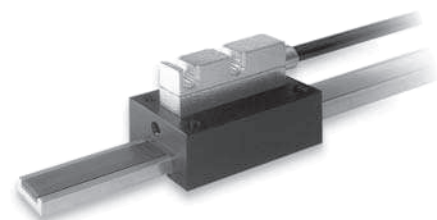
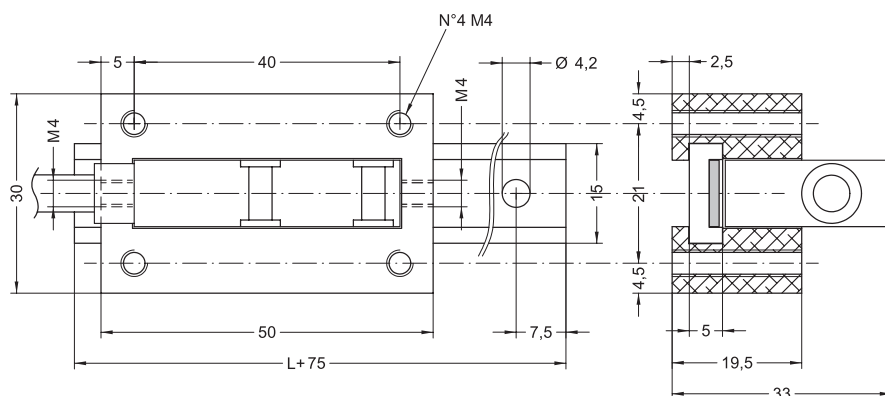
- Protection profile for MT50, MT40 or MT32

ORDERING CODE

XXX	-	X
SERIES		LENGTH
PS1		1,0 1 m



www.lika.biz
• Data-sheet
• User manual



PSG

MECHANICAL SPECIFICATIONS

Dimensions:	see drawing
Material:	aluminium, plastic
Measuring length:	Stroke + 75 mm

- Rail and cursor for magnetic sensors series SME2, SME5, SMK

ORDERING CODE

XXX	-	X		X
SERIES		MEASURING LENGTH		MAGNETIC TAPE
PSG		1000 1000 mm (~ 39 inch)		0 without
		730 730 mm (~ 28 inch)		2 with MT20
		640 640 mm (~ 25 inch)		5 with MT50
		460 460 mm (~ 18 inch)		
		280 280 mm (~ 11 inch)		
		190 190 mm (~ 7 inch)		



www.lika.biz
• Data-sheet
• User manual